

SPA PEARL

LOCATED AT THE PEARL HOTEL | 63 MAIN STREET | ROSEMARY BEACH, FL 32461
THEPEARLRB.COM | 850.460.9041

For reservation or further information, contact our
Spa Concierge at 850.460.9041.

ARRIVAL TIME

We encourage our guests to check in 15 minutes prior to scheduled service time. Late arrivals will end at the scheduled time.

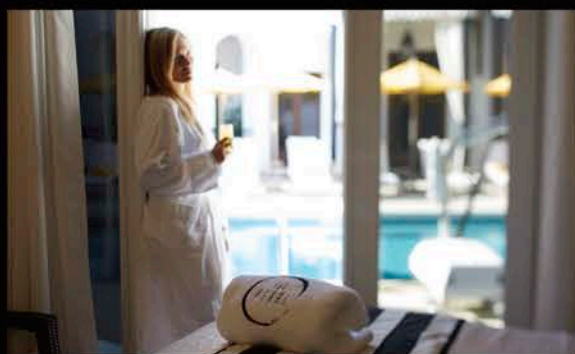
CANCELLING & RESCHEDULING

If you have a change of plans we ask that you contact us 24 hours prior to your scheduled appointment. Cancellation or rescheduling within 24 hours of your service will result in a 50% charge of the service booked. In the event that you fail to notify us of your need to cancel or reschedule you will be charged 100% of the value of the service.

GRATUITY

For your convenience, a 20% gratuity will be added to each service.
Prices and products are subject to change.

THEPEARLRB.COM



Managed by ST. JOE CLUB & RESORTS®

FACIALS

PEARL SENSATION

This signature treatment is customized for you. Our estheticians begin with a thorough consultation to determine your needs and then craft a facial as individual as you are. **50 minutes \$140**

INTENSE REFRESHER FACIAL

Experience the power of 5 intense exfoliants to help improve cell turnover for a radiant complexion. This facial will leave your skin glowing as it amplifies oxidants and locks in hydration. **50 minutes \$160**

**Not recommended for sensitive skin, those on retinol products, those with allergies to aspirin or who are pregnant/nursing.*

TRIPLE ILLUMINATING FACIAL

Treat your skin to the renewing benefits of a lactic peel while you receive the rejuvenating effects of peptides, vitamin C, green tea, and cucumber. This facial exfoliates and visibly plumps fine lines and wrinkles for renewed smoothness and instant radiance - perfect for that special occasion! Awarded best Skin Refresher by Fitness Magazine. **50 minutes 5% - \$130 | 20% - \$140**

NUFACE EXPRESS LIFT

This express facial provides the benefits of the NuFace toning device for improved facial contour, skin tone, and a visible lift. **25 minutes \$65**

**Contraindicated for certain medical conditions. Please inquire before booking.*

GENTLEMAN'S FACIAL

Developed with the needs of today's active man in mind; this facial targets specific concerns with deep cleansing, exfoliation and rejuvenating benefits. **50 minutes \$130**

FACIAL ENHANCEMENTS

EYES

Our signature eye treatment targets fine lines and fatigue. This mask will soften the contours of the delicate eye area. **\$25**

EXTENDED FACIAL

If you require additional time to address special needs or simply prefer the ultimate facial experience you may wish to extend your facial time by 30 minutes. **\$60**

NUFACE FACIAL TONING DEVICE

This stimulating device offers an instant lift to any facial. **\$35**

NECK AND DECOLLETE' TREATMENT

As we age the neck and decollete' are susceptible to a loss of suppleness, firmness, tone, and elasticity. These masks will restore the youthful appearance of this sensitive area. **\$35**

MESSAGE THERAPIES

(in-room massage available with advance request; \$40 additional charge)

SWEDISH

Let your mind and body be transported to a tranquil state of relaxation using this soothing, therapeutic technique.

50 minutes \$115 | 80 minutes \$165

PEARL PERFECTION

This massage incorporates a blend of deep tissue and relaxing Swedish techniques designed to meet your individual needs.

50 minutes \$120 | 80 minutes \$170

DEEP TISSUE

Deep Tissue massages are recommended for clients who are accustomed to a firmer touch. **50 minutes \$130 | 80 minutes \$180**

25 MINUTE CUSTOM MESSAGE

Relax and enjoy an express massage that will focus on your specific needs. **25 minutes \$60**

PEARL STONE RITUAL

This will ignite your senses as it combines a crushed rice scrub to your feet and an essential oil lotion of lemongrass and coconut to your body. Your relaxation is made complete with the application of warmed stones to relieve tension in your back, leaving you feeling peaceful and serene.

75 minutes \$180

DUAL TREATMENT ROOM

Couples, friends, and family may wish to share their massage experience by booking in our dual treatment room. This shared experience includes a Pearl Perfection massage, sparkling wine and a sweet treat. **50 minutes \$160 | 80 minutes \$210**

MOTHER'S MESSAGE

A relaxing Swedish massage for the mother-to-be relieves tension, and focuses on those areas that undergo changes during pregnancy. **50 minutes \$130 | 75 minutes \$180**

**Physicians written approval required*

MESSAGE THERAPY ENHANCEMENTS

Massage enhancements do not add time to your service(s); however, they offer the additional benefit of special products or protocol to enrich your service(s).

Aromatherapy: **\$15**

Muscle and Joint relief: **\$10**

Hot Stones: **\$20**

Warm Oil Scalp Treatment: **\$25**

WAXING

Brow: **\$25**

Lip: **\$20**

Chin: **\$20**

Bikini: **\$50 and up**

Underarm: **\$30**

Chest: **\$60**

Back: **\$60 and up**

Legs: **\$50 and up**

Brazilian Wax: **\$65 and up**

SIGNATURE BODY TREATMENTS

SEASONAL SCRUB/MESSAGE COMBINATION

A full body scrub to compliment the season. Your needs change throughout the year; From over exposed skin in the summer, to parched skin during the winter months - our seasonal scrub/massage combination will leave you renewed and refreshed. **75 minutes \$175**

MOTHER OF PEARL

A full body scrub prepares your skin to receive all of the detoxifying benefits of an antioxidant mask. Enjoy a light scalp massage as nutrients are introduced and impurities are purged. This treatment is made complete with a hydration application. Emerge re-energized and radiating with soft nutrient-rich skin. **80 minutes \$185**

TROPICAL BLISS

Create an exotic tropical experience with this luxurious body treatment. Smooth away dry skin with a pineapple papaya body scrub. Your skin is drenched in a warm kukui coconut oil blend. This moisturizing combination is followed by a warm coconut hydrating milk application that will nourish your skin with vital proteins. **50 minutes \$135**

PEARL NAIL SERVICES

CLASSIC PEARL MANICURE

A complete nail shaping, cuticle treatment including a soothing aromatic soak and lotion massage followed by a buff and polish. **30 minutes \$35**

CLASSIC PEARL PEDICURE

A complete nail shaping, cuticle treatment including a soothing aromatic soak and lotion massage followed by a buff and polish. **30 minutes \$45**

ULTIMATE PEARL MANICURE

Begin with a skin recovery soak to relax muscles and soften the skin. This is followed by a sugar scrub application that exfoliates and moisturizes your skin. Rough dry skin is gently buffed away and quenched with a warm paraffin application. Nails are then groomed and polished to perfection. **45 minutes \$70**

ULTIMATE PEARL PEDICURE

Begin with a skin recovery soak to relax muscles and soften the skin. This is followed by a sugar scrub application that exfoliates and moisturizes your skin. Rough dry skin is gently buffed away and quenched with a warm paraffin application. Nails are then groomed and polished to perfection. **50 minutes \$85**

NAIL ENHANCEMENTS

Shellac Removal: **30 minutes \$20**

Shellac add on to hands: **\$10**

Shellac add on to feet: **\$20**

Polish Change hands: **\$20**

Polish Change feet: **\$25**

French Polish: **\$15**